



**Asia-Pacific  
Economic Cooperation**

---

**2009/SCCP/SWWG/WKSP4/015**

## **ASEAN Single Window**

Submitted by: ASEAN



**Single Window Working Group Capacity  
Building Workshop 4  
Singapore  
6-8 April 2009**



## ASEAN SINGLE WINDOW

by:

ATTY. REYNALDO S. NICOLAS  
Deputy Commissioner, Assessment and Operations Coordinating Group  
Bureau of Customs  
Republic of the Philippines

## OUTLINE

- History and Background
- Mandate
- Organization
- Synchronization & Standardization Initiatives
- Accomplishments
- Next Steps



## MANDATE FOR ASW

- ASEAN HEADS OF STATE agreed to establish the ASW to expedite cargo clearance - 9<sup>th</sup> ASEAN Summit - Bali, Indonesia, Oct 2003

**“Adopt the Single Window approach including the electronic processing of trade documents at national and regional levels.”**

- ASEAN ECONOMIC MINSITERS (AEM) Meeting agreed to establish an ASEAN Inter-Agency Task Force to design an appropriate *model* for the ASW - Yogyakarta, Indonesia, 19-20 Jan 2004

## VISION OF THE ASW

Accelerate ASEAN economic integration by 2015.

## ORGANIZATIONAL MOBILIZATION



## **ASEAN SINGLE WINDOW ACTIVITIES (2004 to 2009)**

- 3 Steering Committee Meetings (2007 -08)
- 8 Technical Working Group Meetings (2007-09)
- 6 Legal Working Group Meetings (2007-09)
- 8 Inter-Agency Task Force Meetings (2004-06)
- 7 Capacity Building Workshops (2006-08)

## **INTERNATIONAL DONOR SUPPORT FOR ASW**

1. ASEAN-EU Program for Regional Integration and Support (APRIS) – Phase 1 & Phase 2
2. US-ASEAN Training Assistance and Training Facility, Phase 2

## DEFINITION: ASEAN SINGLE WINDOW

“The ASEAN Single Window (ASW) is the *environment* where National Single Windows of Member Countries operate and integrate.”

(from Agreement to Establish and Implement the ASW, AEM, 09 Dec 2005)

## DEFINITION: NATIONAL SINGLE WINDOW

- Single submission of data and information;
- Single and synchronous processing of data and information;
- Single decision-making for Customs release and clearance.

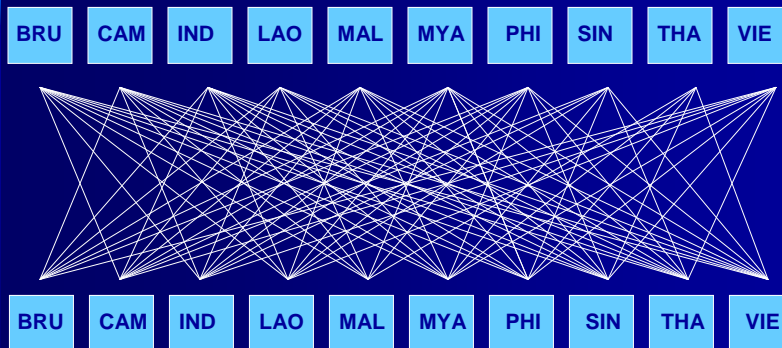
(from Agreement to Establish and Implement the ASW, AEM, 09 Dec 2005)

# NATIONAL SINGLE WINDOW

Release Time: 30 minutes

Single Submitting Processing Decision-Making

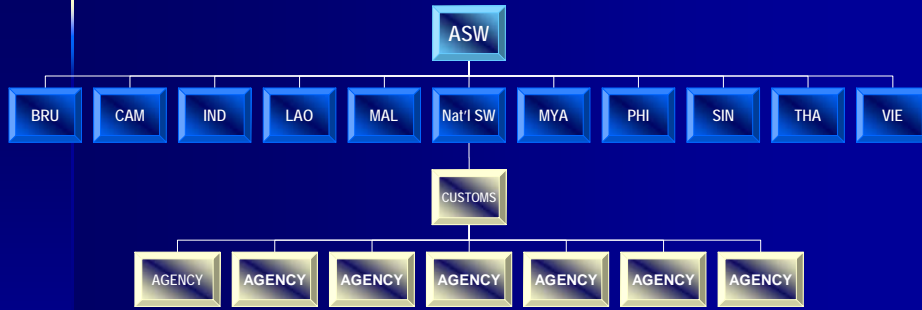
## ONE-TO-MANY OR ONE SINGLE WINDOW



$$\text{Number of bilateral combinations} = 45 = \frac{n + (n-1)}{2}$$

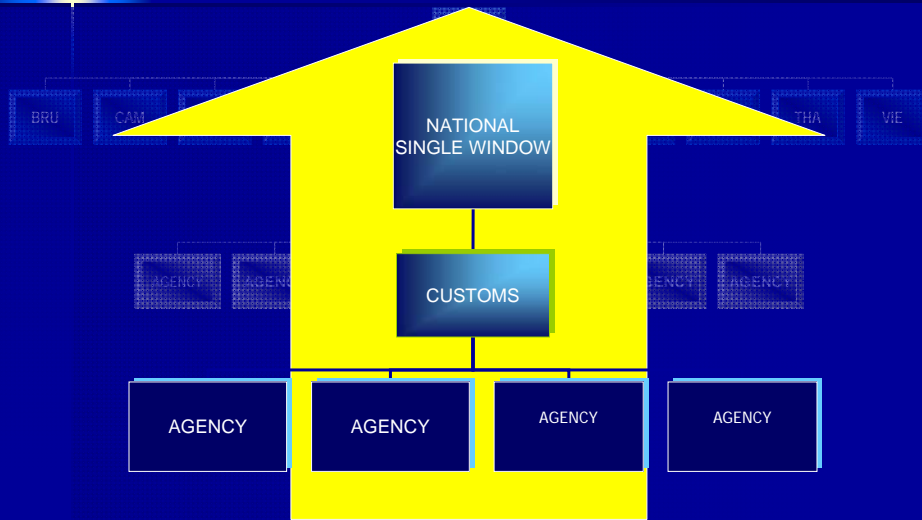
# ASEAN SINGLE WINDOW CONCEPT

(Bottom-to-Top Strategy/Integration of National Single Windows)

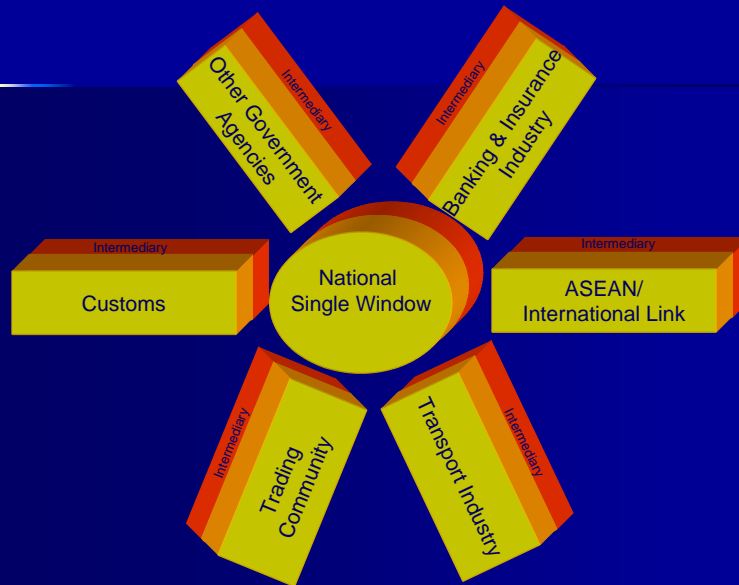


# ASEAN SINGLE WINDOW CONCEPT

(Bottom-to-Top Strategy/Integration of National Single Windows)



## ASW = 10 National Single Windows



## SYNCHRONIZATION & STANDARDIZATION EFFORTS

- ✓ Agreement
- ✓ Protocol
- ✓ Technical Document - Architecture
- ✓ ASEAN Customs Declaration Form
- ✓ ASEAN Cargo Processing Model
- ✓ ASW Readiness Assessment Survey
- ✓ ASEAN Customs Declaration

# ASW AGREEMENT

## *Agreement to Establish and Implement the ASEAN Single Window*

signed by ASEAN Economic Ministers (AEM), 09 December 2005, Kuala Lumpur, Malaysia

### ASW AGREEMENT: OBLIGATION OF MEMBER COUNTRIES

Operationalize their National Single Windows before:

#### ■ 2008

- Brunei Darussalam
- Indonesia
- Malaysia
- Philippines
- Thailand
- Singapore

#### ■ 2012

- Cambodia
- Lao PDR
- Myanmar
- Vietnam

## **ASW PROTOCOL**

### *Legal and Technical Frameworks for the ASEAN Single Window*

signed by Senior Economic (Finance)  
Ministers (SEOM), 2006

## **ASW TECHNICAL GUIDE**

- Compilation of relevant international standards, procedures, documents,
- To be adopted as deemed appropriate by Member Countries
- Subject to regular reviews and updates in line with new technological developments

## ASW TECHNICAL DOCUMENTATION

### Architecture of the ASEAN Single Window

#### MODELS & METHODOLOGIES

- WCO
- UNTDDED
- UMM
- UML
- UN & Other International Conventions

## COMPARATIVE MATRIX OF ASEAN INFORMATION PARAMETERS FOR CARGO RELEASE AND CLEARANCE

ASEAN	MAPPING TO	MAPPING TO	MAPPING TO	MAPPING TO
INFORMATION PARAMETERS	WCO DATA SET (Version)	WCO DATA SET	BRUNEI	CAMBODIA
Type of declaration and customs procedures and regimes				
Identification of Customs office (of departure, of destination, of clearance)				
Reference number of Customs Declaration				
Number of forms of the declaration and its respective uses				
Date of physical importation or exportation				

**ASEAN DATA MODEL**  
 (Workbase 1) for  
 Import Document  
 & C.O.

# ASEAN CUSTOMS DECLARATION FORM

- **FORMAT:** Single Administrative Document (SAD)
- **MANUAL PROCESSING:** Document should be uniform
- **COMPUTERIZED PROCESSING:** Uniform data parameters
- **DATA PARAMETERS:** 48 Data Elements

(14<sup>th</sup> DG Meeting, Cebu, Philippines, Nov 2005)

## CLASSIFICATION OF ASW DATA ELEMENTS

1. **Compulsory** - Required elements for ASW purposes by all Member Countries
2. **Mandatory** - Required by at least one Member Country
3. **Conditional** - classified as conditional by at least one Member Country (e.g. industry-based, avian)
4. **Optional** - All data requirements that are open to all Member Countries for any of purposes of their NSWs within the ASW environment

## **PROTOCOL: Article 8 - APPLICATION OF I.C.T.**

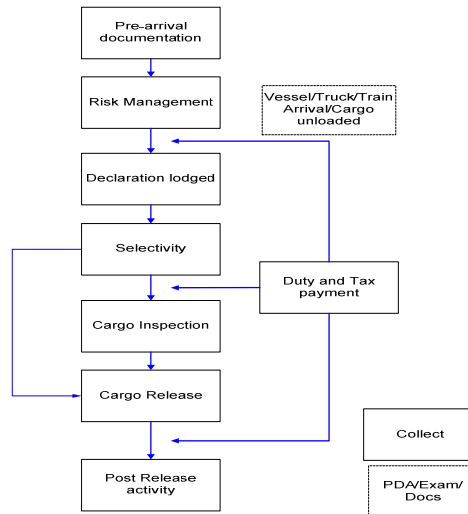
### **APPLICATION OF ICT**

- Appropriate Technologies
- Open Architecture
- International Standards
- UN/EDIFACT
- XML
- Secure Infrastructure

## **ASEAN CARGO PROCESSING MODEL**

- Import (Air)
- Import (Sea)
- Export
- Transit
- Transshipment
- Bonded Movement Of Goods
- Warehouses
- Temporary Admission

## ASEAN CARGO PROCESSING MODELS Import - Sea (1 of 8)



## PHILIPPINE-THAILAND ASW PILOT PROJECT

- Signed MOU in December 2005
- APRIS-supported
- 2 Bilateral Technical Meetings in Manila and Bangkok - 21 Mar 2006 & May 30, 2006
- Identified pilot systems
  - Country of Origin Document
- Successful first stage test in May 2006

## REGIONAL/FEDERATED SINGLE WINDOW MODEL

*The ASW is the secured environment where NSWs integrate and operate.*

*The ASW constitutes a regional facility to enable a seamless, standardized and harmonized **routing and communication of trade and customs-related information and data** for customs clearance and release from and to NSWs.*

*Trade and related customs data and information will stay within, and belong to respective Member States".*

## ASW EXCHANGE GATEWAY PROJECT 2008

- Led by Indonesia and Malaysia
- Piloted the Federated Approach
- 7 Members involved
- USAID-supported
- Used the CEPT Form D
- Successful by November 2008

## **LEGAL AND REGULATORY- RELATED ACTIVITIES (2007 to 2009)**

- Conducted Capacity Building Workshops on legal and e-commerce aspects of ASW
- Agreed to finalize an MOU for the implementation of the technical solution for the ASW for mid 2009

## **2009 Activities**

- 2 Steering Committee Meetings
- 2-3 Technical Working Group Meetings
- 2-4 Legal Working Group Meetings
- 2 Capacity Building

## NEXT STEPS

- Deploy the physical infrastructure for the ASW by 2009. Provide the ff:
  - 10 servers
  - Software
  - Applications
  - Security
  - Telecommunications
- Sign the MOU for the deployment of the ASW System
- Continue to further develop NSWs

Thank you.

Reynaldo.nicolas@customs.gov.ph